

# 1811 Eastlake Housing

75 units

1811 Eastlake Ave



## Downtown Emergency Service Center

Funded 2001



# Broadway Crossing

44 units

1531 Broadway



## Capitol Hill Housing

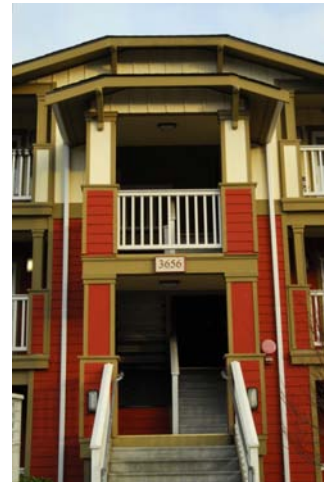
Funded 2004



# Charlestown

7 units

3500 S Charlestown St



**South East Effective Development**  
*Funded 2001*



# Colman School

36 units

2300 S Massachusetts St



**Urban League of Seattle**

*Funded 2005*



# Compass Center 210

79 units

210 Alaskan Way S



**Compass Center**

*Funded 2003*



# Cooper School

36 units

4408 Delridge Way SW



**Delridge Neighborhoods Development Association**

*Funded 2002*



# Croft Place

21 units

6701 Croft Pl SW



**Delridge Neighborhoods Development Association**

*Funded 2001*



# Evans House

75 units

415 10th Ave



**Downtown Emergency Service Center**

*Funded 2005*





# Fremont Solstice Apartments

18 units

3621 Woodland Park Ave N



## Capitol Hill Housing

Funded 2005



# Hiawatha Artists Lofts

61 units

843 Hiawatha Pl S



**Artspace Projects, Inc.**

*Funded 2005*



# Highline Village

24 units

2600 SW Holden St



# Highline West Seattle Mental Health

Funded 2004



# Jubilee House

27 units

620 18th Ave E



## Jubilee Women's Center

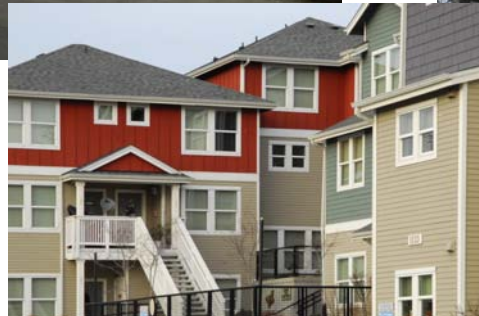
Funded 2006



# Judkins Park

16 units

1123 23rd Ave S



**Housing Resources Group**

*Funded 2003*



# Karlstrom

23 units

65 S Washington St



**Compass Center**

*Funded 2003*



# Kenyon Housing

18 units

3936 S Kenyon St



**Housing Resources Group**

*Funded 2006*



# Langdon & Anne Simons Senior Apartments

95 units

2113 3rd Ave



**Plymouth Housing Group**

*Funded 2005*





# LaSalle

64 units

1426 Western Ave



## Pike Place Market PDA

Funded 2004



# Martin Court

42 units

6188 4th Ave S



**Low Income Housing Institute**

*Funded 2003*



# Morrison Hotel

190 units

507 3rd Ave



## Downtown Emergency Service Center

Funded 2001



# Nihonmachi

50 units

651 S Main St



**Interim Community Development Association**

*Funded 2003*



# Silvian Apartments

32 units

914 E Harrison St



## Capitol Hill Housing

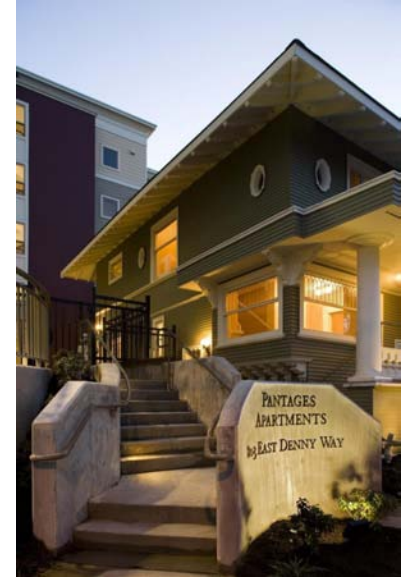
Funded 2004



# Pantages

49 units

803 E Denny Way



## Capitol Hill Housing

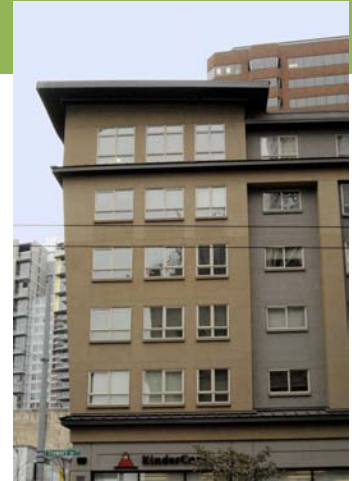
*Funded 2003*



# Stewart Court

65 units

1835 8th Ave



**Housing Resources Group**

*Funded 2001*



# Plymouth on Stewart

87 units

116 Stewart St



**Plymouth Housing Group**

*Funded 2004*





# Stone Way

70 units

1205 N 45th St



**Housing Resources Group**

*Funded 2004*



# West Seattle Community Resource Center

34 units

6500 35th Ave SW



**Delridge Neighborhoods Development Association**

*Funded 2004*

